

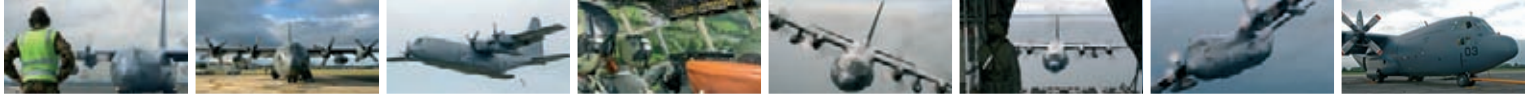



**PREPARE FOR TAKE OFF**



# //PAPER PLANE INSTRUCTIONS

**You will need:** tape (double sided is best), scissors and two to three paperclips (alternatively you can use Blu-Tak). The Hercules C-130 should take approx 60-90 minutes to make. When printing, select "fit to page" in printer properties but make sure all sheets are printed to the same scale.



1. Roughly cut out all the pieces leaving the pink lines.
2. Fold along the indicated pink lines of all the parts.
3. Cut out all pieces as accurately as possible.
4. Fold in the tabs (the bits that say FOLD).  FOLD
5. Fold in the tabs on the 2 ribs.
6. Place ribs inside the fuselage as shown. This provides strength for all your crashes.
7. Tape up/glue main part of fuselage.
8. Tape up aft part of fuselage. This is tricky so take your time. Start at the tail.
9. Do the same for the front. If using Blu-Tak then place inside nose. This is also tricky so it's important to go slow to ensure it is done correctly.
10. Leave the front of the fuselage open so that you can add weight when the aircraft is all joined together.
11. Next tape the horizontal stabiliser onto the top rear of the fuselage (there is approximately a 20mm overhang). Line up the horizontal stabiliser with the line details on the fuselage. If not put on properly, your C-130H will fly unpredictably.
12. Fold the tail in half along the fold line and tape/glue in place. Now fold the tabs out to 90 degrees and tape/glue on top of the horizontal stabiliser along the middle line. (Note that there are two separate tabs for the tail, one slightly higher than the other. This is to ensure that it sits properly on the horizontal stabiliser.)
13. Place the wing ink side down and perform the three folds as shown.
14. Now fold the bottom part of the wing over so it meets the top half. Carefully tape the leading edge together.
15. Tape the wing onto the fuselage with the word "down" on the fuselage. The wing should be positioned by lining up the wing and fuselage details. (They should be lined up with the two parallel lines on the wing.)
16. Cut the slots out for the rudder (Tail fin), ailerons (Wing) and elevators (Horizontal stab).
17. Place paper clips or other weight inside the front of the nose until the aircraft is balanced on the middle of the wing.
18. Tape up the nose of the fuselage when balanced.

## WELL DONE. NOW YOU'RE READY FOR TAKE OFF.

19. Holding the aircraft behind the wing, firmly launch in a straight and level attitude. If it dives then fold the elevators up slightly. Do the opposite if it climbs too steeply.
20. If the aircraft turns to the left, slightly lower the aileron (the tab on the back of the wing) on the left hand side. Do the opposite if turning right.
21. Repair any cuts with tape and if the aircraft is excessively damaged just print out another one.

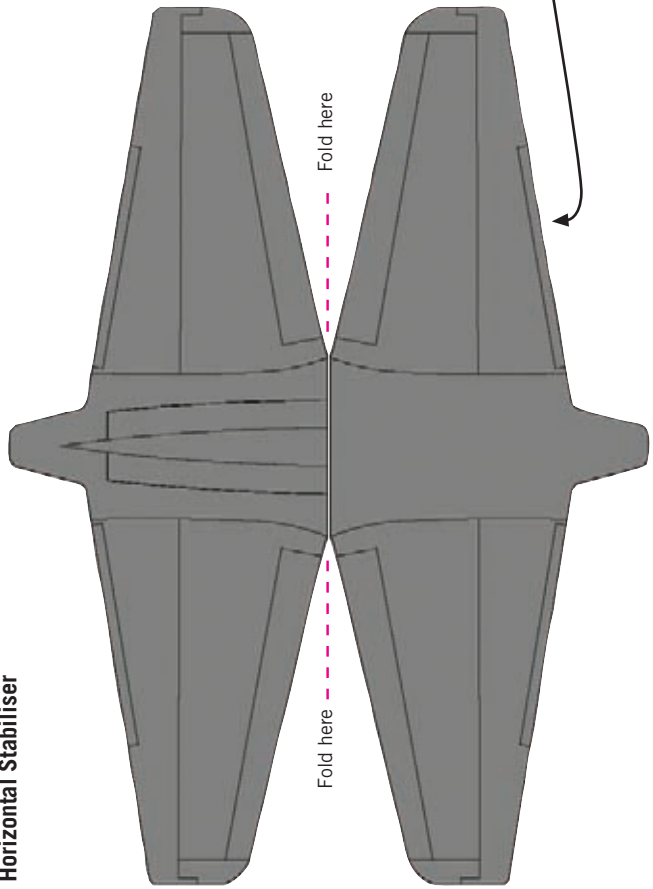
## PREPARE FOR TAKE OFF!

# 40 SQUADRON C-130H HERCULES




For information about careers in the Royal New Zealand Air Force call: **0800 AIRFORCE**  
or visit: [www.airforce.mil.nz](http://www.airforce.mil.nz)

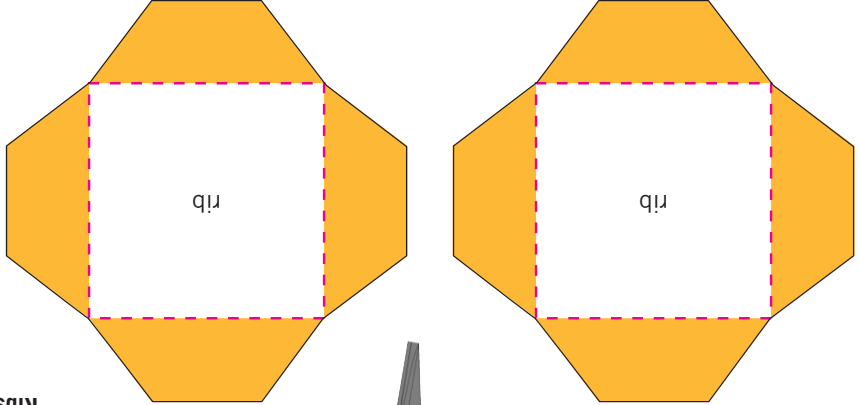
### Horizontal Stabiliser



Fold here

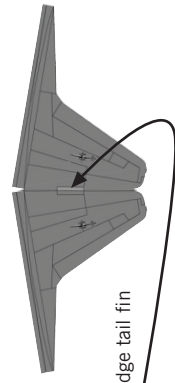
Fold here

Ribs



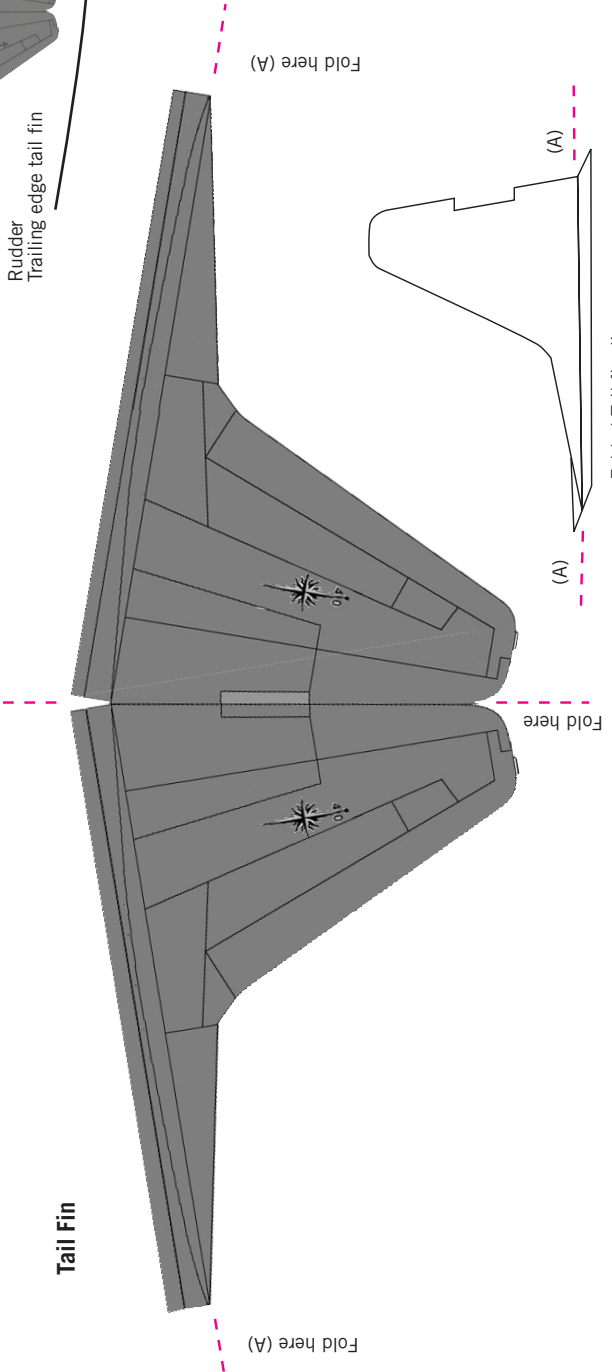
Re: Instruction 16: Tail plane parts

Elevator  
Trailing edge horizontal stab



Rudder  
Trailing edge tail fin

### Tail Fin

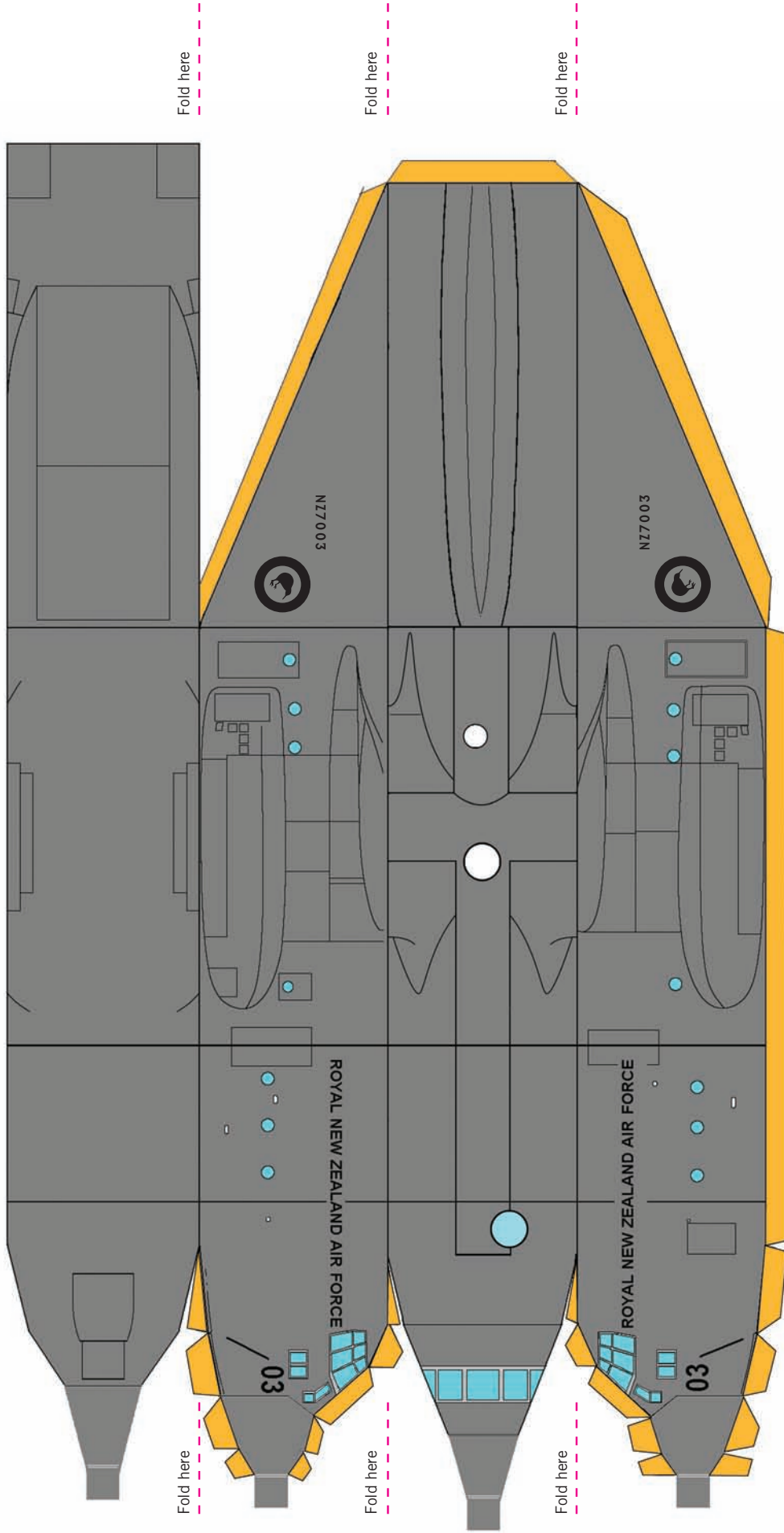


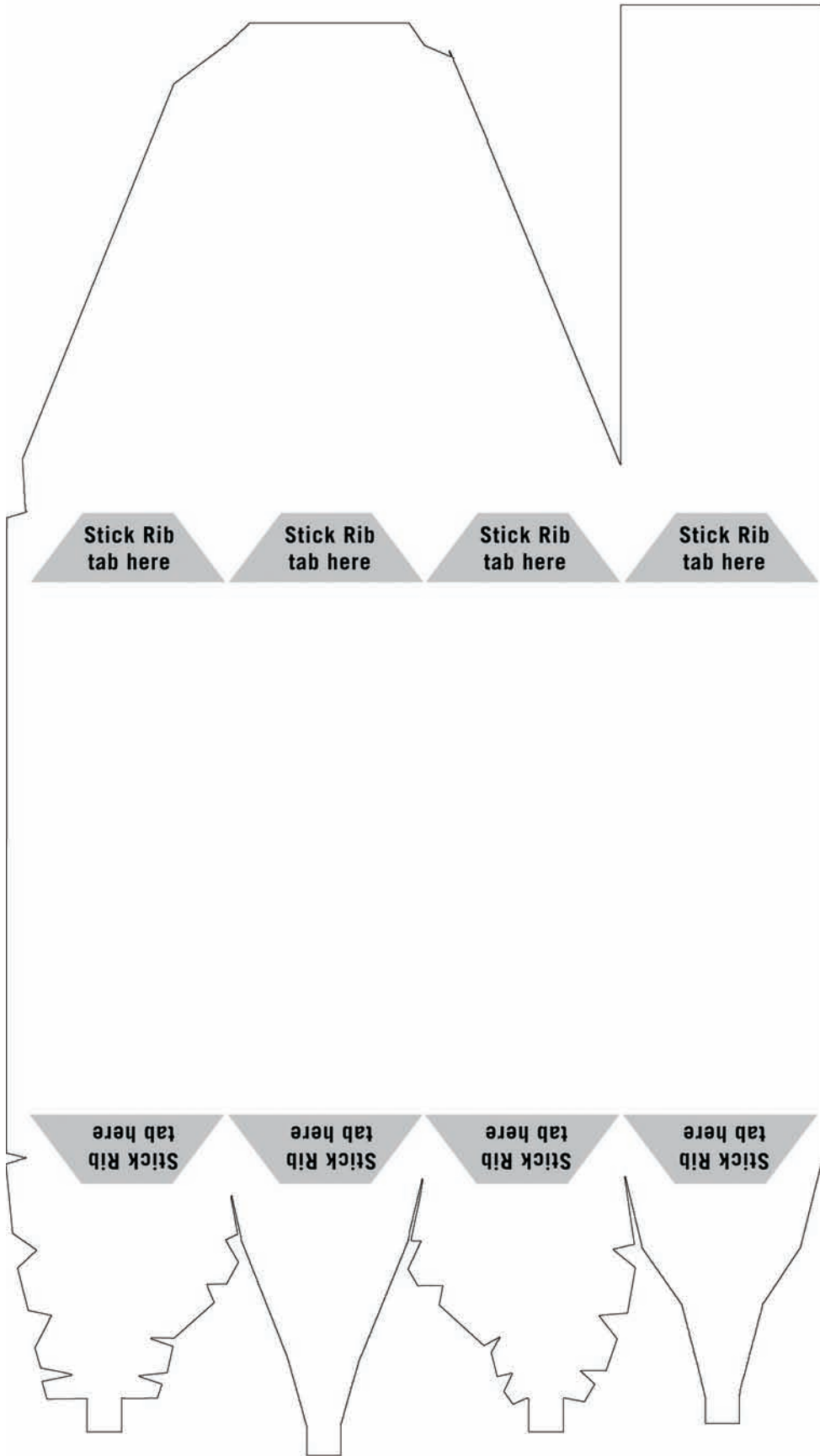
Fold here (A)

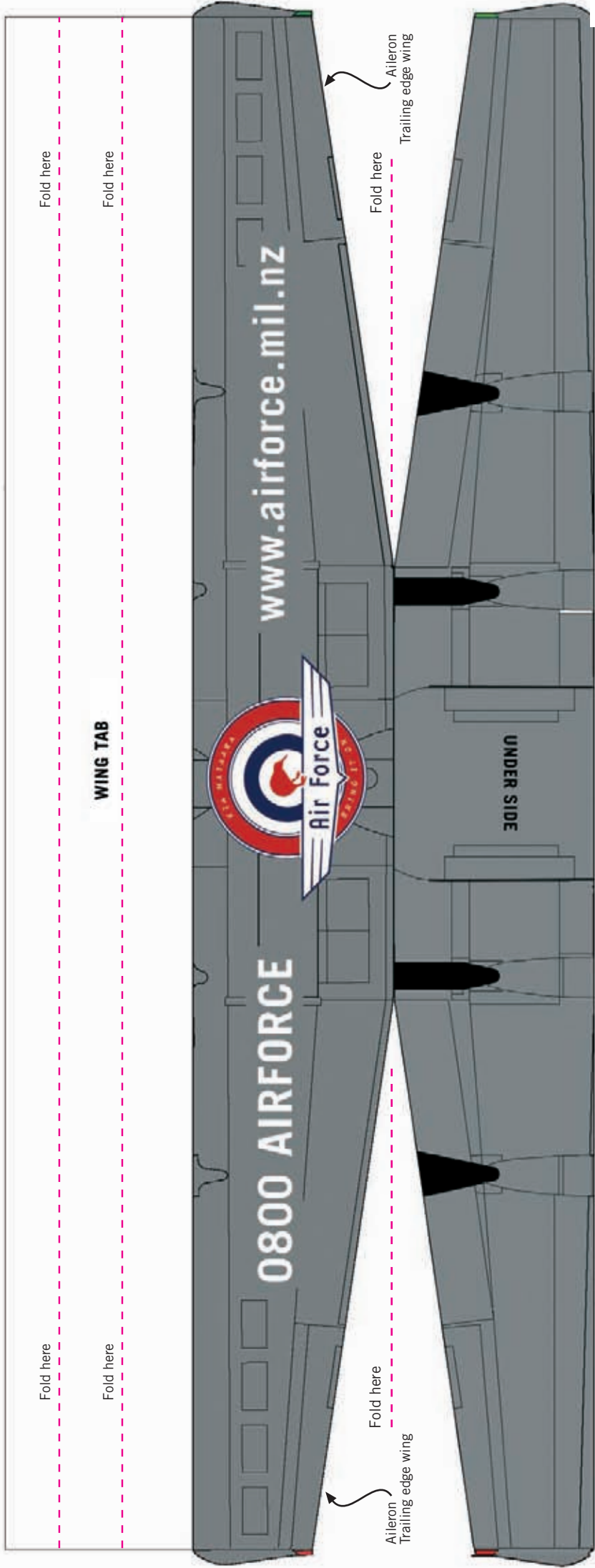
(A)

(A)

Folded Tail fin diagram









For information about careers in the  
Royal New Zealand Air Force call:

**0800 AIRFORCE**

or visit:

**[www.airforce.mil.nz](http://www.airforce.mil.nz)**



If you want to make another plane, go online to  
[www.bringiton.co.nz](http://www.bringiton.co.nz) to download a copy of the artwork.